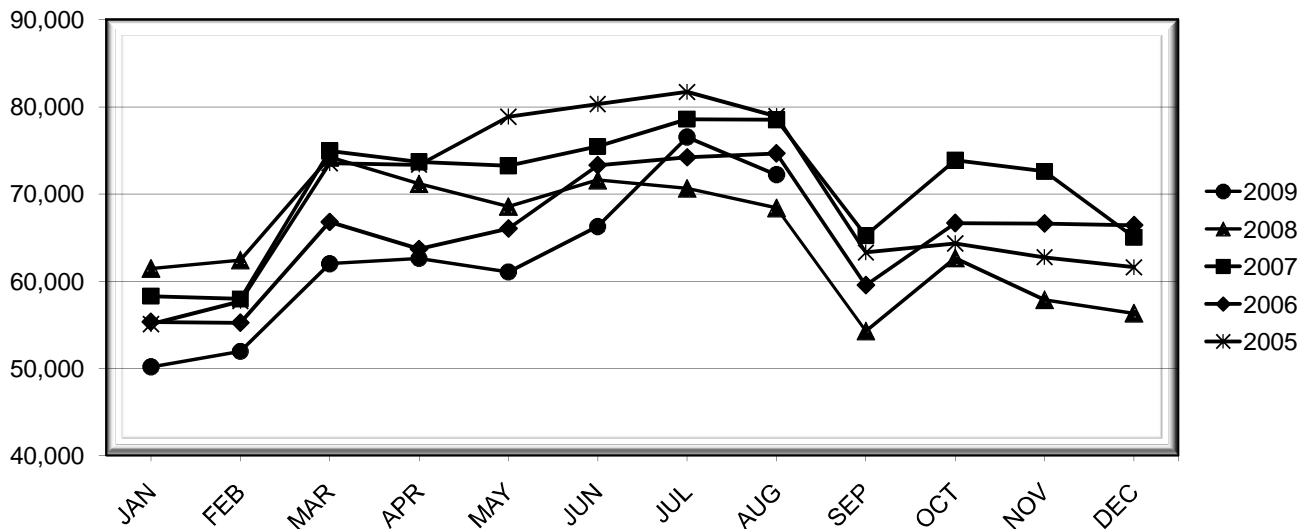


LEHIGH VALLEY INTERNATIONAL AIRPORT MONTHLY TRAFFIC REPORT AUGUST 2009

TOTAL PASSENGER TRAFFIC COMPARISON

<i>Month</i>	<i>2009</i>	<i>Percent Difference</i>	<i>2008</i>	<i>2007</i>	<i>2006</i>	<i>2005</i>
January	50,185	-18.35%	61,467	58,300	55,315	55,088
February	51,957	-16.79%	62,440	57,976	55,252	57,726
March	62,015	-16.47%	74,242	74,945	66,789	73,543
April	62,614	-12.05%	71,192	73,686	63,689	73,368
May	61,070	-10.95%	68,579	73,261	66,055	78,874
June	66,287	-7.44%	71,612	75,457	73,290	80,321
July	76,539	8.31%	70,667	78,592	74,201	81,714
August	72,230	5.58%	68,415	78,530	74,645	78,941
September			54,291	65,241	59,559	63,305
October			62,660	73,890	66,681	64,328
November			57,884	72,603	66,601	62,755
December			56,327	65,045	66,434	61,609

COMPARISON OF TOTAL PASSENGERS CURRENT YEAR VS. PRIOR YEARS



**LEHIGH VALLEY INTERNATIONAL AIRPORT (ABE)
MONTHLY TRAFFIC REPORT
AUGUST 2009**

AUGUST					YEAR-TO-DATE					
					2009	2008	Increase (Decrease)	Percent Difference		
MAJOR AIRLINES:										
Passengers										
Enplaned	5,868	3,023	2,845	94.11%	29,060	24,648	4,412	17.90%		
Deplaned	5,569	2,641	2,928	110.87%	25,524	21,665	3,859	17.81%		
Sub-total	11,437	5,664	5,773	101.92%	54,584	46,313	8,271	17.86%		
REGIONAL AIRLINES:										
Passengers										
Enplaned	30,231	31,398	(1,167)	-3.72%	223,278	251,063	(27,785)	-11.07%		
Deplaned	30,562	31,353	(791)	-2.52%	225,049	251,430	(26,381)	-10.49%		
Sub-total	60,793	62,751	(1,958)	-3.12%	448,327	502,493	(54,166)	-10.78%		
TOTAL PASSENGERS	72,230	68,415	3,815	5.58%	502,911	548,806	(45,895)	-8.36%		
FREIGHT:										
Enplaned	1,334,666	1,733,296	(398,630)	-23.00%	9,344,187	14,701,498	(5,357,311)	-36.44%		
Deplaned	1,110,853	1,603,667	(492,814)	-30.73%	8,520,174	13,444,565	(4,924,391)	-36.63%		
Sub-total	2,445,519	3,336,963	(891,444)	-26.71%	17,864,361	28,146,063	(10,281,702)	-36.53%		
MAIL:										
Enplaned	0	11	(11)	-100.00%	0	12	(12)	-100.00%		
Deplaned	0	0	0	N/A	0	399	(399)	-100.00%		
Sub-total	0	11	(11)	-100.00%	0	411	(411)	-100.00%		
TOTAL CARGO	2,445,519	3,336,974	(891,455)	-26.71%	17,864,361	28,146,474	(10,282,113)	-36.53%		

MONTHLY AIRCRAFT ACTIVITY

The FEDERAL AVIATION ADMINISTRATION
AIR TRAFFIC CONTROL TOWER at LVIA recorded
the following aircraft take-offs and landings for the month:

AUGUST					YEAR-TO-DATE					
					2009	2008	Increase (Decrease)	Percent Difference		
Major Airlines	391	1,155	(764)	-66.15%	3,018	9,882	(6,864)	-69.46%		
Regional Airlines	1,881	1,798	83	4.62%	13,833	10,210	3,623	35.48%		
General Aviation	3,039	5,371	(2,332)	-43.42%	22,272	32,798	(10,526)	-32.09%		
Military	66	34	32	94.12%	532	597	(65)	-10.89%		
Total Itinerant	5,377	8,358	(2,981)	-35.67%	39,655	53,487	(13,832)	-25.86%		
Total Local	4,539	4,405	134	3.04%	33,863	35,479	(1,616)	-4.55%		
TOTAL OPERATIONS	9,916	12,763	(2,847)	-22.31%	73,518	88,966	(15,448)	-17.36%		

**LEHIGH VALLEY INTERNATIONAL AIRPORT (ABE)
MONTHLY TRAFFIC REPORT
AIRLINE PASSENGER STATISTICS**

AIRLINE / OPERATOR	AUGUST ENPLANEMENT DATA				AUGUST DEPLANEMENT DATA			
	2009	2008	Difference	% Change	2009	2008	Difference	% Change
Air Georgian	286	514	(228)	-44.36%	314	495	(181)	-36.57%
AirTran	3,306	-	3,306	N/A	3,326	-	3,326	N/A
Allegiant Air	7,123	5,654	1,469	25.98%	7,263	5,728	1,535	26.80%
*Continental Shuttle Bus	922	865	57	6.59%	724	617	107	17.34%
CommutAir	1,368	-	1,368	N/A	913	-	913	N/A
Express Jet	1,622	2,825	(1,203)	-42.58%	1,993	2,864	(871)	-30.41%
*Continental Express Total	2,990	2,825	165	5.84%	2,906	2,864	42	1.47%
Atlantic Southeast	3,456	4,166	(710)	-17.04%	3,474	4,168	(694)	-16.65%
Comair	-	-	0	N/A	457	137	320	233.58%
Chautauqua	-	628	(628)	-100.00%	-	681	(681)	-100.00%
Delta Connection Total	3,456	4,794	(1,338)	-27.91%	3,931	4,986	(1,055)	-21.16%
Pinnacle	3,300	3,212	88	2.74%	3,328	3,142	186	5.92%
Northwest Mainline	-	-	0	N/A	-	-	0	N/A
Northwest Airlink Total	3,300	3,212	88	2.74%	3,328	3,142	186	5.92%
Colgan Air	3,205	2,443	762	31.19%	3,006	2,375	631	26.57%
Mesa	3,867	2,220	1,647	74.19%	3,884	2,291	1,593	69.53%
Skywest	-	2,373	(2,373)	-100.00%	47	1,966	(1,919)	-97.61%
United Express Total	7,072	7,036	36	0.51%	6,937	6,632	305	4.60%
PSA Airlines	2,511	3,100	(589)	-19.00%	2,509	3,464	(955)	-27.57%
Piedmont Airlines	3,493	4,021	(528)	-13.13%	3,374	3,796	(422)	-11.12%
US Airways Express Subtotal	6,004	7,121	(1,117)	-15.69%	5,883	7,260	(1,377)	-18.97%
US Airways Mainline	2,562	3,023	(461)	-15.25%	2,243	2,641	(398)	-15.07%
US Airways Total	8,566	10,144	(1,578)	-15.56%	8,126	9,901	(1,775)	-17.93%
Based Charters	-	7	(7)	-100.00%	-	7	(7)	-100.00%
Charters	-	235	(235)	-100.00%	-	239	(239)	-100.00%
	AUGUST ENPLANEMENT DATA				AUGUST DEPLANEMENT DATA			
	<u>2009</u>	<u>2008</u>	<u>Difference</u>	<u>% Change</u>	<u>2009</u>	<u>2008</u>	<u>Difference</u>	<u>% Change</u>
MONTHLY TOTALS	36,099	34,421	1,678	4.87%	36,131	33,994	2,137	6.29%

TOTAL PASSENGERS FOR AUGUST 2009: 72,230
PERCENT CHANGE VERSUS AUGUST 2008: +5.58%

*Continental Shuttle Bus passengers are not included in any airline passenger enplanement or deplanement statistics.