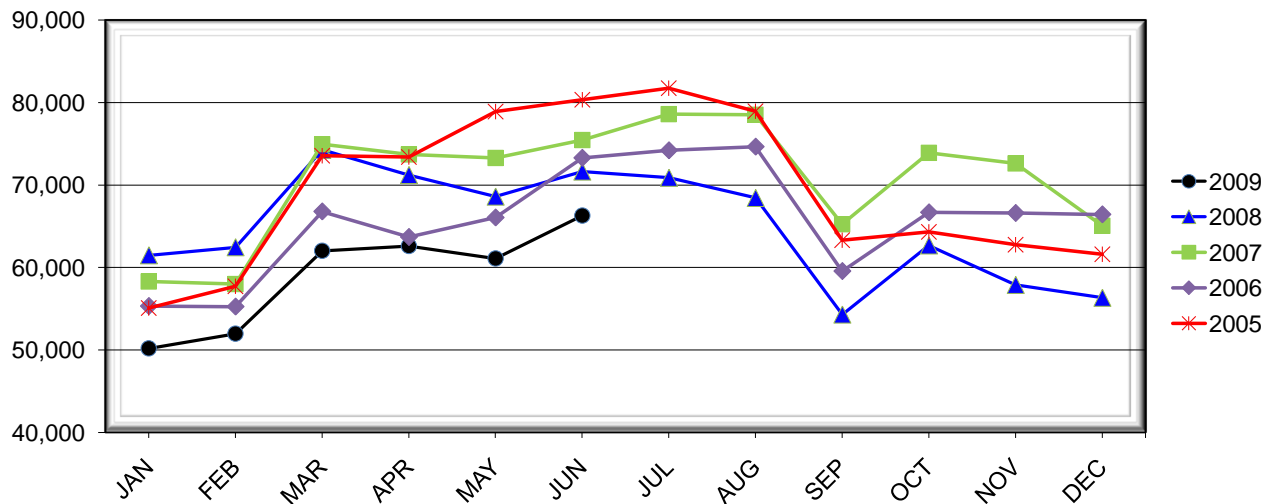


## LEHIGH VALLEY INTERNATIONAL AIRPORT MONTHLY TRAFFIC REPORT JUNE 2009

### TOTAL PASSENGER TRAFFIC COMPARISON

<i>Month</i>	<i>2009</i>	<i>Percent Difference</i>	<i>2008</i>	<i>2007</i>	<i>2006</i>	<i>2005</i>
January	<b>50,185</b>	-18.35%	61,467	58,300	55,315	55,088
February	<b>51,957</b>	-16.79%	62,440	57,976	55,252	57,726
March	<b>62,015</b>	-16.47%	74,242	74,945	66,789	73,543
April	<b>62,614</b>	-12.05%	71,192	73,686	63,689	73,368
May	<b>61,070</b>	-10.95%	68,579	73,261	66,055	78,874
June	<b>66,287</b>	-7.44%	71,612	75,457	73,290	80,321
July			70,859	78,592	74,201	81,714
August			68,415	78,530	74,645	78,941
September			54,291	65,241	59,559	63,305
October			62,660	73,890	66,681	64,328
November			57,884	72,603	66,601	62,755
December			56,327	65,045	66,434	61,609

### COMPARISON OF TOTAL PASSENGERS CURRENT YEAR VS. PRIOR YEARS



**LEHIGH VALLEY INTERNATIONAL AIRPORT (ABE)  
MONTHLY TRAFFIC REPORT  
JUNE 2009**

**JUNE**

**YEAR-TO-DATE**

		2009	2008	Increase (Decrease)	Percent Difference	2009	2008	Increase (Decrease)	Percent Difference
<b>MAJOR AIRLINES:</b>									
Passengers									
Enplaned		2,945	3,135	(190)	-6.06%	17,226	18,549	(1,323)	-7.13%
Deplaned		2,530	2,616	(86)	-3.29%	13,996	16,265	(2,269)	-13.95%
Sub-total		5,475	5,751	(276)	-4.80%	31,222	34,814	(3,592)	-10.32%
<b>REGIONAL AIRLINES:</b>									
Passengers									
Enplaned		30,540	32,863	(2,323)	-7.07%	160,972	187,667	(26,695)	-14.22%
Deplaned		30,272	32,998	(2,726)	-8.26%	161,934	187,051	(25,117)	-13.43%
Sub-total		60,812	65,861	(5,049)	-7.67%	322,906	374,718	(51,812)	-13.83%
<b>TOTAL PASSENGERS</b>		<b>66,287</b>	<b>71,612</b>	<b>(5,325)</b>	<b>-7.44%</b>	<b>354,128</b>	<b>409,532</b>	<b>(55,404)</b>	<b>-13.53%</b>
<b>FREIGHT:</b>									
Enplaned		1,228,393	1,557,009	(328,616)	-21.11%	6,756,991	11,279,748	(4,522,757)	-40.10%
Deplaned		1,056,674	1,615,333	(558,659)	-34.58%	6,182,809	10,135,124	(3,952,315)	-39.00%
Sub-total		2,285,067	3,172,342	(887,275)	-27.97%	12,939,800	21,414,872	(8,475,072)	-39.58%
<b>MAIL:</b>									
Enplaned		0	0	0	N/A	0	0	0	N/A
Deplaned		0	37	(37)	-100.00%	0	372	(372)	-100.00%
Sub-total		0	37	(37)	-100.00%	0	372	(372)	-100.00%
<b>TOTAL CARGO</b>		<b>2,285,067</b>	<b>3,172,379</b>	<b>(887,312)</b>	<b>-27.97%</b>	<b>12,939,800</b>	<b>21,415,244</b>	<b>(8,475,444)</b>	<b>-39.58%</b>

**MONTHLY AIRCRAFT ACTIVITY**

The FEDERAL AVIATION ADMINISTRATION  
AIR TRAFFIC CONTROL TOWER at LVIA recorded  
the following aircraft take-offs and landings for the month:

**JUNE**

**YEAR-TO-DATE**

		2009	2008	Increase (Decrease)	Percent Difference	2009	2008	Increase (Decrease)	Percent Difference
Major Airlines		349	1,325	(976)	-73.66%	2,189	7,514	(5,325)	-70.87%
Regional Airlines		1,767	1,181	586	49.62%	10,028	6,630	3,398	51.25%
General Aviation		3,357	4,193	(836)	-19.94%	16,025	22,044	(6,019)	-27.30%
Military		63	156	(93)	-59.62%	388	503	(115)	-22.86%
Total Itinerant		5,536	6,855	(1,319)	-19.24%	28,630	36,691	(8,061)	-21.97%
Total Local		4,139	5,727	(1,588)	-27.73%	23,787	26,568	(2,781)	-10.47%
<b>TOTAL OPERATIONS</b>		<b>9,675</b>	<b>12,582</b>	<b>(2,907)</b>	<b>-23.10%</b>	<b>52,417</b>	<b>63,259</b>	<b>(10,842)</b>	<b>-17.14%</b>

