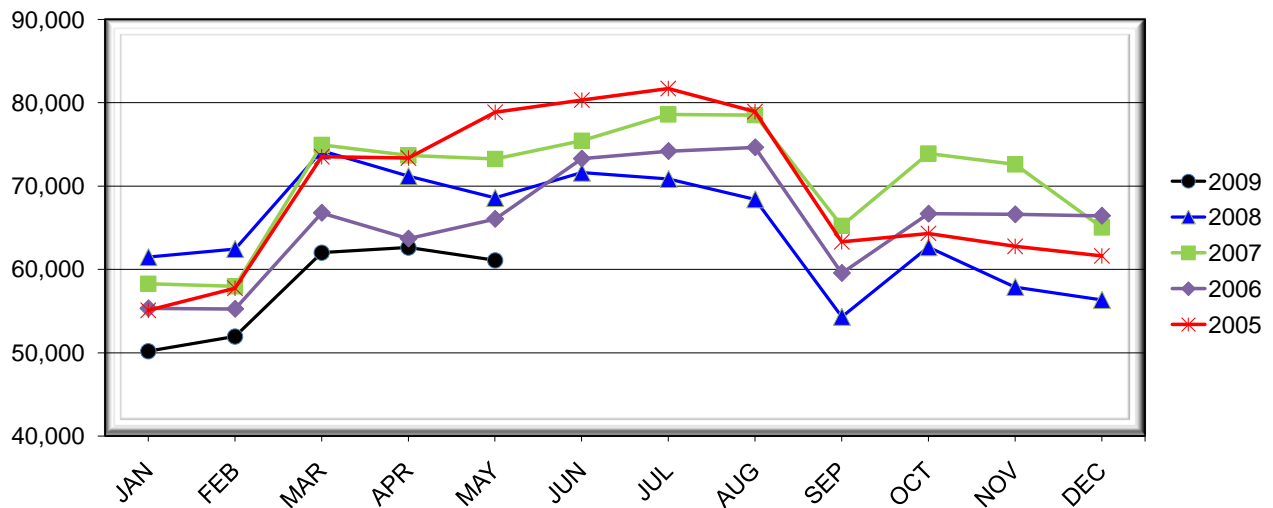


LEHIGH VALLEY INTERNATIONAL AIRPORT MONTHLY TRAFFIC REPORT MAY 2009

TOTAL PASSENGER TRAFFIC COMPARISON

<i>Month</i>	<i>2009</i>	<i>Percent Difference</i>	<i>2008</i>	<i>2007</i>	<i>2006</i>	<i>2005</i>
January	50,185	-18.35%	61,467	58,300	55,315	55,088
February	51,957	-16.79%	62,440	57,976	55,252	57,726
March	62,015	-16.47%	74,242	74,945	66,789	73,543
April	62,614	-12.05%	71,192	73,686	63,689	73,368
May	61,070	-10.95%	68,579	73,261	66,055	78,874
June			71,612	75,457	73,290	80,321
July			70,859	78,592	74,201	81,714
August			68,415	78,530	74,645	78,941
September			54,291	65,241	59,559	63,305
October			62,660	73,890	66,681	64,328
November			57,884	72,603	66,601	62,755
December			56,327	65,045	66,434	61,609

COMPARISON OF TOTAL PASSENGERS CURRENT YEAR VS. PRIOR YEARS



**LEHIGH VALLEY INTERNATIONAL AIRPORT (ABE)
MONTHLY TRAFFIC REPORT
MAY 2009**

		MAY				YEAR-TO-DATE			
		2009	2008	Increase (Decrease)	Percent Difference	2009	2008	Increase (Decrease)	Percent Difference
MAJOR AIRLINES:									
Passengers									
Enplaned		2,707	3,152	(445)	-14.12%	14,281	15,414	(1,133)	-7.35%
Deplaned		2,416	3,037	(621)	-20.45%	11,466	13,649	(2,183)	-15.99%
Sub-total		5,123	6,189	(1,066)	-17.22%	25,747	29,063	(3,316)	-11.41%
REGIONAL AIRLINES:									
Passengers									
Enplaned		27,717	31,197	(3,480)	-11.15%	130,432	154,804	(24,372)	-15.74%
Deplaned		28,230	31,193	(2,963)	-9.50%	131,662	154,053	(22,391)	-14.53%
Sub-total		55,947	62,390	(6,443)	-10.33%	262,094	308,857	(46,763)	-15.14%
TOTAL PASSENGERS		61,070	68,579	(7,509)	-10.95%	287,841	337,920	(50,079)	-14.82%
FREIGHT:									
Enplaned		1,122,021	1,910,356	(788,335)	-41.27%	5,528,598	9,722,739	(4,194,141)	-43.14%
Deplaned		1,046,611	1,706,142	(659,531)	-38.66%	5,126,135	8,519,791	(3,393,656)	-39.83%
Sub-total		2,168,632	3,616,498	(1,447,866)	-40.04%	10,654,733	18,242,530	(7,587,797)	-41.59%
MAIL:									
Enplaned		0	0	0	N/A	0	0	0	N/A
Deplaned		0	71	(71)	-100.00%	0	335	(335)	-100.00%
Sub-total		0	71	(71)	-100.00%	0	335	(335)	-100.00%
TOTAL CARGO		2,168,632	3,616,569	(1,447,937)	-40.04%	10,654,733	18,242,865	(7,588,132)	-41.60%

MONTHLY AIRCRAFT ACTIVITY

The FEDERAL AVIATION ADMINISTRATION
AIR TRAFFIC CONTROL TOWER at LVIA recorded
the following aircraft take-offs and landings for the month:

		MAY				YEAR-TO-DATE			
		2009	2008	Increase (Decrease)	Percent Difference	2009	2008	Increase (Decrease)	Percent Difference
Major Airlines		333	1,204	(871)	-72.34%	1,840	6,189	(4,349)	-70.27%
Regional Airlines		1,689	1,208	481	39.82%	8,261	5,449	2,812	51.61%
General Aviation		2,963	4,003	(1,040)	-25.98%	12,668	17,851	(5,183)	-29.03%
Military		57	47	10	21.28%	325	347	(22)	-6.34%
Total Itinerant		5,042	6,462	(1,420)	-21.97%	23,094	29,836	(6,742)	-22.60%
Total Local		3,754	4,447	(693)	-15.58%	19,648	20,841	(1,193)	-5.72%
TOTAL OPERATIONS		8,796	10,909	(2,113)	-19.37%	42,742	50,677	(7,935)	-15.66%

**LEHIGH VALLEY INTERNATIONAL AIRPORT (ABE)
MONTHLY TRAFFIC REPORT
AIRLINE PASSENGER STATISTICS**

AIRLINE / OPERATOR	MAY ENPLANEMENT DATA				MAY DEPLANEMENT DATA			
	2009	2008	Difference	% Change	2009	2008	Difference	% Change
Air Georgian	239	569	(330)	-58.00%	240	586	(346)	-59.04%
Allegiant Air	6,626	5,789	837	14.46%	6,749	6,138	611	9.95%
* Continental Shuttle Bus	896	900	(4)	-0.44%	609	746	(137)	-18.36%
CommutAir	436	-	436	N/A	299	-	299	N/A
Express Jet	1,407	2,812	(1,405)	-49.96%	1,841	2,259	(418)	-18.50%
*Continental Express Total	1,843	2,812	(969)	-34.46%	2,140	2,259	(119)	-5.27%
Atlantic Southeast	2,635	3,560	(925)	-25.98%	2,742	3,745	(1,003)	-26.78%
Comair	-	1,274	(1,274)	-100.00%	117	1,257	(1,140)	-90.69%
Delta Connection Total	2,635	4,834	(2,199)	-45.49%	2,859	5,002	(2,143)	-42.84%
Direct Air	106	-	106	N/A	149	-	149	N/A
Pinnacle	3,152	3,144	8	0.25%	3,204	3,212	(8)	-0.25%
Northwest Airlink Total	3,152	3,144	8	0.25%	3,204	3,212	(8)	-0.25%
Colgan Air	2,845	2,600	245	9.42%	2,685	2,739	(54)	-1.97%
Mesa	3,038	2,457	581	23.65%	2,615	2,488	127	5.10%
Skywest	1,266	2,364	(1,098)	-46.45%	1,411	2,312	(901)	-38.97%
United Express Total	7,149	7,421	(272)	-3.67%	6,711	7,539	(828)	-10.98%
Air Wisconsin	600	285	315	110.53%	604	259	345	133.20%
Chautauqua	-	-	0	N/A	10	-	10	N/A
PSA Airlines	2,702	3,021	(319)	-10.56%	2,809	3,132	(323)	-10.31%
Piedmont Airlines	2,550	3,286	(736)	-22.40%	2,640	3,036	(396)	-13.04%
US Airways Express Subtotal	5,852	6,592	(740)	-11.23%	6,063	6,427	(364)	-5.66%
US Airways Mainline	2,707	3,152	(445)	-14.12%	2,416	3,037	(621)	-20.45%
US Airways Total	8,559	9,744	(1,185)	-12.16%	8,479	9,464	(985)	-10.41%
Based Charters	-	36	(36)	-100.00%	-	30	(30)	-100.00%
Charters	115	-	115	N/A	115	-	115	N/A
	MAY ENPLANEMENT DATA				MAY DEPLANEMENT DATA			
MONTHLY TOTALS	30,424	34,349	(3,925)	-11.43%	30,646	34,230	(3,584)	-10.47%

**TOTAL PASSENGERS FOR MAY 2009: 61,070
PERCENT CHANGE VERSUS MAY 2008: -10.95%**

*Continental Shuttle Bus passengers are not included in any airline passenger enplanement or deplanement statistics.