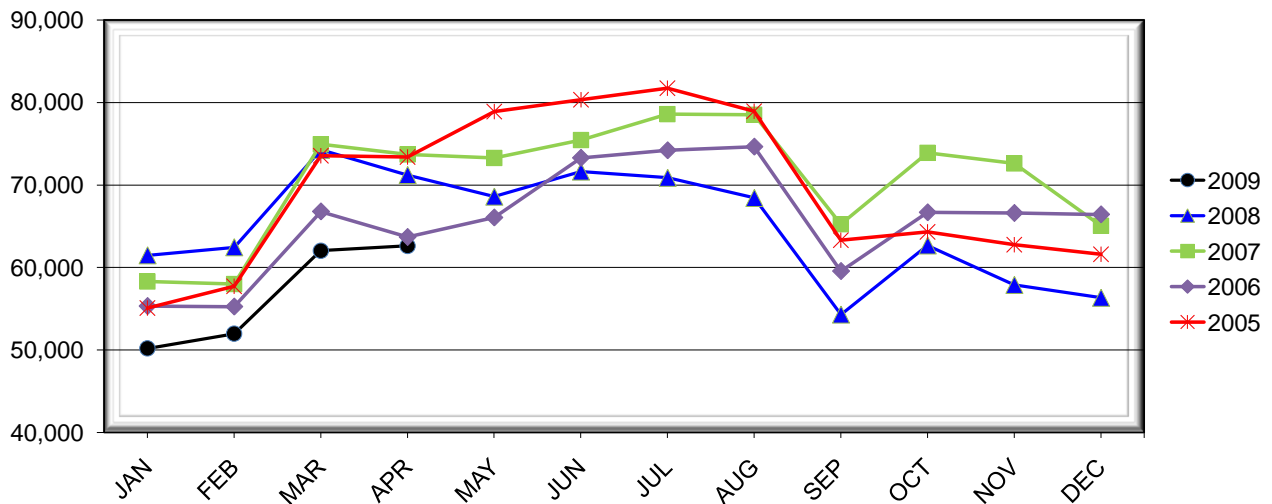


LEHIGH VALLEY INTERNATIONAL AIRPORT MONTHLY TRAFFIC REPORT APRIL 2009

TOTAL PASSENGER TRAFFIC COMPARISON

<i>Month</i>	<i>2009</i>	<i>Percent Difference</i>	<i>2008</i>	<i>2007</i>	<i>2006</i>	<i>2005</i>
January	50,185	-18.35%	61,467	58,300	55,315	55,088
February	51,957	-16.79%	62,440	57,976	55,252	57,726
March	62,015	-16.47%	74,242	74,945	66,789	73,543
April	62,614	-12.05%	71,192	73,686	63,689	73,368
May			68,579	73,261	66,055	78,874
June			71,612	75,457	73,290	80,321
July			70,859	78,592	74,201	81,714
August			68,415	78,530	74,645	78,941
September			54,291	65,241	59,559	63,305
October			62,660	73,890	66,681	64,328
November			57,884	72,603	66,601	62,755
December			56,327	65,045	66,434	61,609

COMPARISON OF TOTAL PASSENGERS CURRENT YEAR VS. PRIOR YEARS



**LEHIGH VALLEY INTERNATIONAL AIRPORT (ABE)
MONTHLY TRAFFIC REPORT
APRIL 2009**

APRIL

YEAR-TO-DATE

		2009	2008	Increase (Decrease)	Percent Difference	2009	2008	Increase (Decrease)	Percent Difference
MAJOR AIRLINES:									
Passengers									
Enplaned		3,097	3,105	(8)	-0.26%	11,574	12,262	(688)	-5.61%
Deplaned		2,627	2,803	(176)	-6.28%	9,050	10,612	(1,562)	-14.72%
Sub-total		5,724	5,908	(184)	-3.11%	20,624	22,874	(2,250)	-9.84%
REGIONAL AIRLINES:									
Passengers									
Enplaned		27,903	32,398	(4,495)	-13.87%	102,715	123,607	(20,892)	-16.90%
Deplaned		28,987	32,886	(3,899)	-11.86%	103,432	122,860	(19,428)	-15.81%
Sub-total		56,890	65,284	(8,394)	-12.86%	206,147	246,467	(40,320)	-16.36%
TOTAL PASSENGERS		62,614	71,192	(8,578)	-12.05%	226,771	269,341	(42,570)	-15.81%
FREIGHT:									
Enplaned		1,206,324	2,017,140	(810,816)	-40.20%	4,406,577	7,812,383	(3,405,806)	-43.59%
Deplaned		1,028,992	1,747,409	(718,417)	-41.11%	4,079,524	6,813,649	(2,734,125)	-40.13%
Sub-total		2,235,316	3,764,549	(1,529,233)	-40.62%	8,486,101	14,626,032	(6,139,931)	-41.98%
MAIL:									
Enplaned		0	0	0	N/A	0	0	0	N/A
Deplaned		0	53	(53)	-100.00%	0	264	(264)	-100.00%
Sub-total		0	53	(53)	-100.00%	0	264	(264)	-100.00%
TOTAL CARGO		2,235,316	3,764,602	(1,529,286)	-40.62%	8,486,101	14,626,296	(6,140,195)	-41.98%

MONTHLY AIRCRAFT ACTIVITY

The FEDERAL AVIATION ADMINISTRATION
AIR TRAFFIC CONTROL TOWER at LVIA recorded
the following aircraft take-offs and landings for the month:

APRIL

YEAR-TO-DATE

		2009	2008	Increase (Decrease)	Percent Difference	2009	2008	Increase (Decrease)	Percent Difference
Major Airlines		376	1,330	(954)	-71.73%	1,507	4,985	(3,478)	-69.77%
Regional Airlines		1,696	1,209	487	40.28%	6,572	4,241	2,331	54.96%
General Aviation		2,809	4,087	(1,278)	-31.27%	10,605	13,848	(3,243)	-23.42%
Military		114	95	19	20.00%	268	300	(32)	-10.67%
Total Itinerant		4,995	6,721	(1,726)	-25.68%	18,952	23,374	(4,422)	-18.92%
Total Local		4,635	5,467	(832)	-15.22%	15,894	16,394	(500)	-3.05%
TOTAL OPERATIONS		9,630	12,188	(2,558)	-20.99%	34,846	39,768	(4,922)	-12.38%

**LEHIGH VALLEY INTERNATIONAL AIRPORT (ABE)
MONTHLY TRAFFIC REPORT
AIRLINE PASSENGER STATISTICS**

AIRLINE / OPERATOR	APRIL ENPLANEMENT DATA				APRIL DEPLANEMENT DATA			
	2009	2008	Difference	% Change	2009	2008	Difference	% Change
Air Georgian	271	644	(373)	-57.92%	231	712	(481)	-67.56%
Allegiant Air	7,699	7,330	369	5.03%	8,022	7,834	188	2.40%
*Continental Shuttle Bus	827	818	9	1.10%	562	704	(142)	-20.17%
CommutAir	546	-	546	N/A	314	-	314	N/A
Express Jet	1,309	2,500	(1,191)	-47.64%	1,715	2,382	(667)	-28.00%
*Continental Express Total	1,855	2,500	(645)	-25.80%	2,029	2,382	(353)	-14.82%
Atlantic Southeast	2,495	2,657	(162)	-6.10%	2,656	2,709	(53)	-1.96%
Chautauqua	-	767	(767)	-100.00%	-	840	(840)	-100.00%
Comair	-	1,276	(1,276)	-100.00%	-	1,319	(1,319)	-100.00%
Delta Connection Total	2,495	4,700	(2,205)	-46.91%	2,656	4,868	(2,212)	-45.44%
Direct Air	1,259	-	1,259	N/A	1,393	-	1,393	N/A
Pinnacle	2,719	2,917	(198)	-6.79%	2,811	2,904	(93)	-3.20%
Northwest Airlink Total	2,719	2,917	(198)	-6.79%	2,811	2,904	(93)	-3.20%
Colgan Air	2,579	2,532	47	1.86%	2,607	2,631	(24)	-0.91%
Mesa	2,686	987	1,699	172.14%	2,369	1,047	1,322	126.27%
Skywest	862	3,941	(3,079)	-78.13%	1,079	3,833	(2,754)	-71.85%
United Express Total	6,127	7,460	(1,333)	-17.87%	6,055	7,511	(1,456)	-19.38%
Air Wisconsin	-	194	(194)	-100.00%	-	191	(191)	-100.00%
PSA Airlines	2,546	3,042	(496)	-16.31%	2,630	3,363	(733)	-21.80%
Piedmont Airlines	2,879	3,568	(689)	-19.31%	3,110	3,077	33	1.07%
US Airways Express Subtotal	5,425	6,804	(1,379)	-20.27%	5,740	6,631	(891)	-13.44%
US Airways Mainline	3,097	3,105	(8)	-0.26%	2,627	2,803	(176)	-6.28%
US Airways Total	8,522	9,909	(1,387)	-14.00%	8,367	9,434	(1,067)	-11.31%
Based Charters	-	43	(43)	-100.00%	-	44	(44)	-100.00%
Charters	53	-	53	N/A	50	-	50	N/A
	APRIL ENPLANEMENT DATA				APRIL DEPLANEMENT DATA			
MONTHLY TOTALS	31,000	35,503	(4,503)	-12.68%	31,614	35,689	(4,075)	-11.42%

**TOTAL PASSENGERS FOR APRIL 2009: 62,614
PERCENT CHANGE VERSUS APRIL 2008: -12.05%**

*Continental Shuttle Bus passengers are not included in any airline passenger enplanement or deplanement statistics.