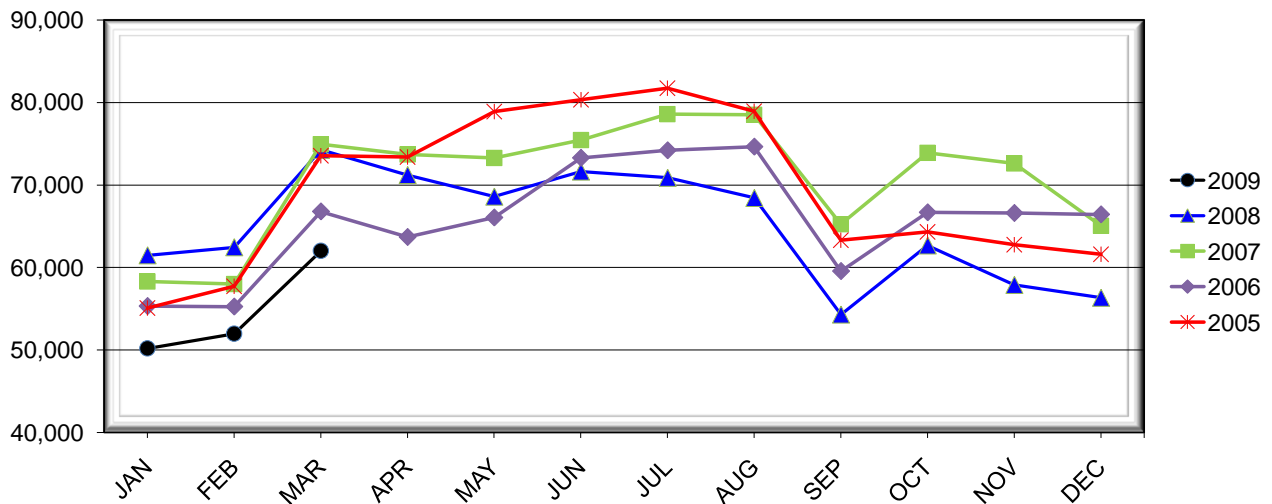


LEHIGH VALLEY INTERNATIONAL AIRPORT MONTHLY TRAFFIC REPORT MARCH 2009

TOTAL PASSENGER TRAFFIC COMPARISON

<i>Month</i>	<i>2009</i>	<i>Percent Difference</i>	<i>2008</i>	<i>2007</i>	<i>2006</i>	<i>2005</i>
January	50,185	-18.35%	61,467	58,300	55,315	55,088
February	51,957	-16.79%	62,440	57,976	55,252	57,726
March	62,015	-16.47%	74,242	74,945	66,789	73,543
April			71,192	73,686	63,689	73,368
May			68,579	73,261	66,055	78,874
June			71,612	75,457	73,290	80,321
July			70,859	78,592	74,201	81,714
August			68,415	78,530	74,645	78,941
September			54,291	65,241	59,559	63,305
October			62,660	73,890	66,681	64,328
November			57,884	72,603	66,601	62,755
December			56,327	65,045	66,434	61,609

COMPARISON OF TOTAL PASSENGERS CURRENT YEAR VS. PRIOR YEARS



**LEHIGH VALLEY INTERNATIONAL AIRPORT (ABE)
MONTHLY TRAFFIC REPORT
MARCH 2009**

MARCH

YEAR-TO-DATE

		2009	2008	Increase (Decrease)	Percent Difference	2009	2008	Increase (Decrease)	Percent Difference
MAJOR AIRLINES:									
Passengers									
Enplaned		2,839	3,095	(256)	-8.27%	8,477	9,157	(680)	-7.43%
Deplaned		2,477	2,718	(241)	-8.87%	6,423	7,809	(1,386)	-17.75%
Sub-total		5,316	5,813	(497)	-8.55%	14,900	16,966	(2,066)	-12.18%
REGIONAL AIRLINES:									
Passengers									
Enplaned		27,784	33,573	(5,789)	-17.24%	74,812	91,209	(16,397)	-17.98%
Deplaned		28,915	34,856	(5,941)	-17.04%	74,445	89,974	(15,529)	-17.26%
Sub-total		56,699	68,429	(11,730)	-17.14%	149,257	181,183	(31,926)	-17.62%
TOTAL PASSENGERS		62,015	74,242	(12,227)	-16.47%	164,157	198,149	(33,992)	-17.15%
FREIGHT:									
Enplaned		1,073,233	1,858,295	(785,062)	-42.25%	3,200,253	5,795,243	(2,594,990)	-44.78%
Deplaned		1,012,787	1,641,173	(628,386)	-38.29%	3,050,532	5,066,240	(2,015,708)	-39.79%
Sub-total		2,086,020	3,499,468	(1,413,448)	-40.39%	6,250,785	10,861,483	(4,610,698)	-42.45%
MAIL:									
Enplaned		0	0	0	N/A	0	0	0	N/A
Deplaned		0	85	(85)	-100.00%	0	211	(211)	-100.00%
Sub-total		0	85	(85)	-100.00%	0	211	(211)	-100.00%
TOTAL CARGO		2,086,020	3,499,553	(1,413,533)	-40.39%	6,250,785	10,861,694	(4,610,909)	-42.45%

MONTHLY AIRCRAFT ACTIVITY

The FEDERAL AVIATION ADMINISTRATION
AIR TRAFFIC CONTROL TOWER at LVIA recorded
the following aircraft take-offs and landings for the month:

MARCH

YEAR-TO-DATE

		2009	2008	Increase (Decrease)	Percent Difference	2009	2008	Increase (Decrease)	Percent Difference
Major Airlines		424	1,222	(798)	-65.30%	1,131	3,655	(2,524)	-69.06%
Regional Airlines		1,712	1,097	615	56.06%	4,876	3,032	1,844	60.82%
General Aviation		2,908	3,564	(656)	-18.41%	7,796	9,761	(1,965)	-20.13%
Military		72	59	13	22.03%	154	205	(51)	-24.88%
Total Itinerant		5,116	5,942	(826)	-13.90%	13,957	16,653	(2,696)	-16.19%
Total Local		4,370	4,040	330	8.17%	11,259	10,927	332	3.04%
TOTAL OPERATIONS		9,486	9,982	(496)	-4.97%	25,216	27,580	(2,364)	-8.57%

**LEHIGH VALLEY INTERNATIONAL AIRPORT (ABE)
MONTHLY TRAFFIC REPORT
AIRLINE PASSENGER STATISTICS**

AIRLINE / OPERATOR	MARCH ENPLANEMENT DATA				MARCH DEPLANEMENT DATA			
	2009	2008	Difference	% Change	2009	2008	Difference	% Change
Air Georgian	276	449	(173)	-38.53%	265	493	(228)	-46.25%
Allegiant Air	8,308	9,895	(1,587)	-16.04%	8,436	10,149	(1,713)	-16.88%
*Continental Shuttle Bus	942	961	(19)	-1.98%	752	797	(45)	-5.65%
CommutAir	411	-	411	N/A	240	-	240	N/A
Express Jet	1,188	1,815	(627)	-34.55%	1,505	1,818	(313)	-17.22%
*Continental Express Total	1,599	1,815	(216)	-11.90%	1,745	1,818	(73)	-4.02%
Atlantic Southeast	2,265	2,577	(312)	-12.11%	2,600	2,771	(171)	-6.17%
Chautauqua	-	809	(809)	-100.00%	-	798	(798)	-100.00%
Comair	-	1,082	(1,082)	-100.00%	-	1,368	(1,368)	-100.00%
Delta Connection Total	2,265	4,468	(2,203)	-49.31%	2,600	4,937	(2,337)	-47.34%
Direct Air	755	-	755	N/A	919	-	919	N/A
Pinnacle	2,805	3,039	(234)	-7.70%	2,657	3,083	(426)	-13.82%
Northwest Airlink Total	2,805	3,039	(234)	-7.70%	2,657	3,083	(426)	-13.82%
Colgan Air	2,366	2,611	(245)	-9.38%	2,348	2,711	(363)	-13.39%
Mesa	1,576	983	593	60.33%	1,632	959	673	70.18%
Skywest	1,884	3,529	(1,645)	-46.61%	2,042	3,867	(1,825)	-47.19%
United Express Total	5,826	7,123	(1,297)	-18.21%	6,022	7,537	(1,515)	-20.10%
Air Wisconsin	-	266	(266)	-100.00%	-	257	(257)	-100.00%
PSA Airlines	2,492	2,741	(249)	-9.08%	2,645	3,102	(457)	-14.73%
Piedmont Airlines	3,382	3,593	(211)	-5.87%	3,427	3,156	271	8.59%
US Airways Express Subtotal	5,874	6,600	(726)	-11.00%	6,072	6,515	(443)	-6.80%
US Airways Mainline	2,839	3,095	(256)	-8.27%	2,477	2,718	(241)	-8.87%
US Airways Total	8,713	9,695	(982)	-10.13%	8,549	9,233	(684)	-7.41%
Based Charters	-	35	(35)	-100.00%	-	43	(43)	-100.00%
Charters	76	149	(73)	-48.99%	199	281	(82)	-29.18%
	MARCH ENPLANEMENT DATA				MARCH DEPLANEMENT DATA			
MONTHLY TOTALS	30,623	36,668	(6,045)	-16.49%	31,392	37,574	(6,182)	-16.45%

TOTAL PASSENGERS FOR MARCH 2009: 62,015
PERCENT CHANGE VERSUS MARCH 2008: -16.47%

*Continental Shuttle Bus passengers are not included in any airline passenger enplanement or deplanement statistics.