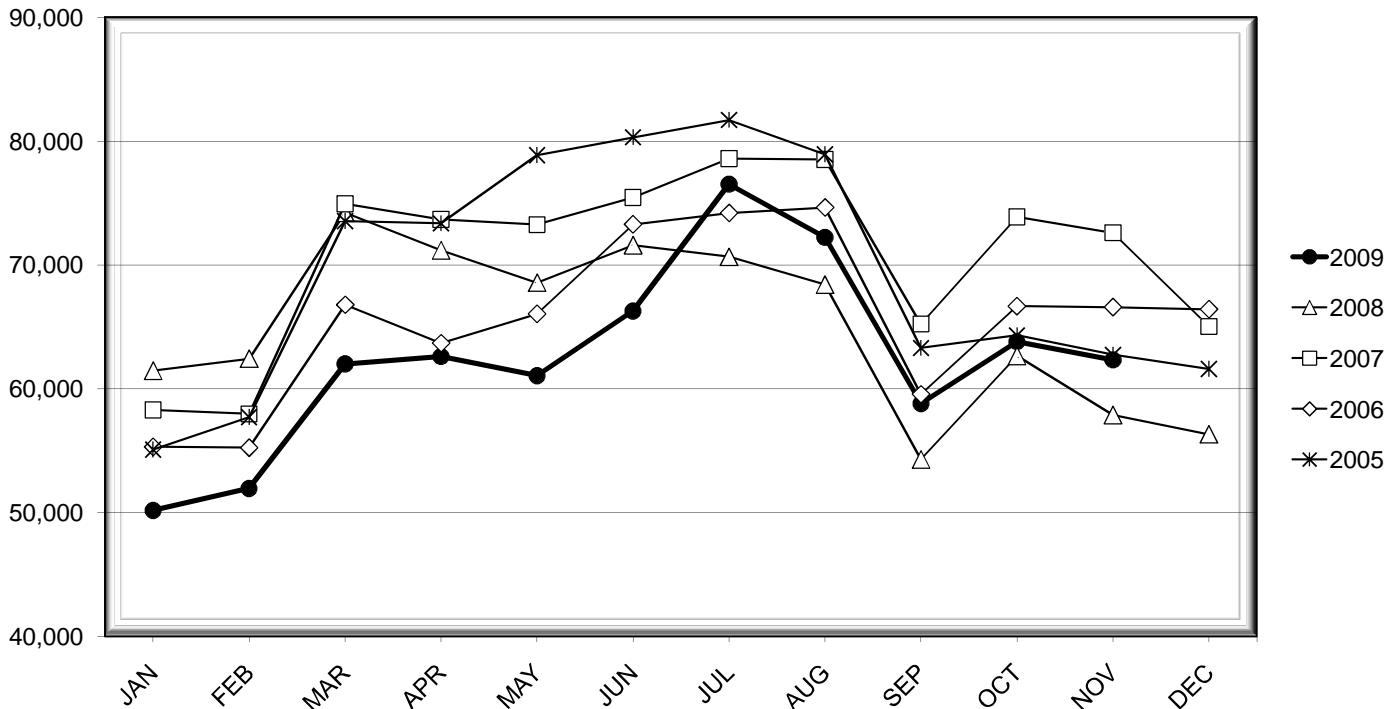


LEHIGH VALLEY INTERNATIONAL AIRPORT MONTHLY TRAFFIC REPORT NOVEMBER 2009

TOTAL PASSENGER TRAFFIC COMPARISON

<i>Month</i>	<i>2009</i>	<i>Percent Difference</i>	<i>2008</i>	<i>2007</i>	<i>2006</i>	<i>2005</i>
January	50,185	-18.35%	61,467	58,300	55,315	55,088
February	51,957	-16.79%	62,440	57,976	55,252	57,726
March	62,015	-16.47%	74,242	74,945	66,789	73,543
April	62,614	-12.05%	71,192	73,686	63,689	73,368
May	61,070	-10.95%	68,579	73,261	66,055	78,874
June	66,287	-7.44%	71,612	75,457	73,290	80,321
July	76,539	8.31%	70,667	78,592	74,201	81,714
August	72,230	5.58%	68,415	78,530	74,645	78,941
September	58,818	8.34%	54,291	65,241	59,559	63,305
October	63,807	1.83%	62,660	73,890	66,681	64,328
November	62,345	7.71%	57,884	72,603	66,601	62,755
December			56,327	65,045	66,434	61,609

COMPARISON OF TOTAL PASSENGERS



**LEHIGH VALLEY INTERNATIONAL AIRPORT (ABE)
MONTHLY TRAFFIC REPORT
NOVEMBER 2009**

		NOVEMBER				YEAR-TO-DATE			
		2009	2008	Increase (Decrease)	Percent Difference	2009	2008	Increase (Decrease)	Percent Difference
MAJOR AIRLINES:									
Passengers									
Enplaned		6,095	2,797	3,298	117.91%	46,361	33,424	12,937	38.71%
Deplaned		6,015	2,448	3,567	145.71%	42,033	29,555	12,478	42.22%
Sub-total		12,110	5,245	6,865	130.89%	88,394	62,979	25,415	40.35%
REGIONAL AIRLINES:									
Passengers									
Enplaned		25,000	25,938	(938)	-3.62%	297,625	330,706	(33,081)	-10.00%
Deplaned		25,235	26,701	(1,466)	-5.49%	299,073	329,956	(30,883)	-9.36%
Sub-total		50,235	52,639	(2,404)	-4.57%	596,698	660,662	(63,964)	-9.68%
TOTAL PASSENGERS		62,345	57,884	4,461	7.71%	685,092	723,641	(38,549)	-5.33%
FREIGHT:									
Enplaned		1,066,607	1,461,738	(395,131)	-27.03%	13,015,213	19,823,345	(6,808,132)	-34.34%
Deplaned		1,003,737	1,417,997	(414,260)	-29.21%	11,974,484	18,223,869	(6,249,385)	-34.29%
Sub-total		2,070,344	2,879,735	(809,391)	-28.11%	24,989,697	38,047,214	(13,057,517)	-34.32%
MAIL:									
Enplaned		0	0	0	N/A	0	12	(12)	-100.00%
Deplaned		0	0	0	N/A	0	399	(399)	-100.00%
Sub-total		0	0	0	N/A	0	411	(411)	-100.00%
TOTAL CARGO		2,070,344	2,879,735	(809,391)	-28.11%	24,989,697	38,047,625	(13,057,928)	-34.32%
CUSTOMS:									
Entries		220	313	(93)	-29.71%	3,152	3,617	(465)	-12.86%

MONTHLY AIRCRAFT ACTIVITY

The FEDERAL AVIATION ADMINISTRATION
AIR TRAFFIC CONTROL TOWER at LVIA recorded
the following aircraft take-offs and landings for the month:

		NOVEMBER				YEAR-TO-DATE			
		2009	2008	Increase (Decrease)	Percent Difference	2009	2008	Increase (Decrease)	Percent Difference
Major Airlines		419	435	(16)	-3.68%	4,111	11,217	(7,106)	-63.35%
Regional Airlines		1,555	1,720	(165)	-9.59%	18,817	15,420	3,397	22.03%
General Aviation		2,984	2,621	363	13.85%	31,383	41,900	(10,517)	-25.10%
Military		68	84	(16)	-19.05%	693	861	(168)	-19.51%
Total Itinerant		5,026	4,860	166	3.42%	55,004	69,398	(14,394)	-20.74%
Total Local		3,831	3,576	255	7.13%	45,917	47,314	(1,397)	-2.95%
TOTAL OPERATIONS		8,857	8,436	421	4.99%	100,921	116,712	(15,791)	-13.53%

**LEHIGH VALLEY INTERNATIONAL AIRPORT (ABE)
MONTHLY TRAFFIC REPORT
AIRLINE PASSENGER STATISTICS**

AIRLINE / OPERATOR	NOVEMBER ENPLANEMENT DATA				NOVEMBER DEPLANEMENT DATA			
	2009	2008	Difference	% Change	2009	2008	Difference	% Change
Air Georgian	206	355	(149)	-41.97%	197	348	(151)	-43.39%
AirTran	3,322	-	3,322	N/A	3,276	-	3,276	N/A
Allegiant Air	3,880	5,046	(1,166)	-23.11%	3,982	5,080	(1,098)	-21.61%
* Continental Shuttle Bus	986	755	231	30.60%	755	604	151	25.00%
CommutAir	1,497	-	1,497	N/A	1,292	-	1,292	N/A
Express Jet	825	2,210	(1,385)	-62.67%	1,014	2,399	(1,385)	-57.73%
*Continental Express Total	2,322	2,210	112	5.07%	2,306	2,399	(93)	-3.88%
Atlantic Southeast	2,867	3,580	(713)	-19.92%	3,127	3,590	(463)	-12.90%
Delta Connection Total	2,867	3,580	(713)	-19.92%	3,127	3,590	(463)	-12.90%
Direct Air	552	126	426	338.10%	509	76	433	569.74%
Pinnacle	3,402	2,697	705	26.14%	3,294	2,823	471	16.68%
Northwest Airlink Total	3,402	2,697	705	26.14%	3,294	2,823	471	16.68%
Colgan Air	2,599	1,877	722	38.47%	2,596	2,199	397	18.05%
Mesa	2,406	1,565	841	53.74%	2,637	1,188	1,449	121.97%
Skywest	1,011	2,410	(1,399)	-58.05%	822	2,661	(1,839)	-69.11%
United Express Total	6,016	5,852	164	2.80%	6,055	6,048	7	0.12%
Air Wisconsin	1,358	-	1,358	N/A	1,659	-	1,659	N/A
Mesa	-	1,316	(1,316)	-100.00%	-	1,368	(1,368)	-100.00%
PSA Airlines	2,110	1,569	541	34.48%	2,159	1,704	455	26.70%
Piedmont Airlines	2,143	2,950	(807)	-27.36%	1,801	3,026	(1,225)	-40.48%
US Airways Express Subtotal	5,611	5,835	(224)	-3.84%	5,619	6,098	(479)	-7.86%
US Airways Mainline	2,773	2,797	(24)	-0.86%	2,739	2,448	291	11.89%
US Airways Total	8,384	8,632	(248)	-2.87%	8,358	8,546	(188)	-2.20%
Based Charters	-	90	(90)	-100.00%	-	90	(90)	-100.00%
Charters	144	147	(3)	-2.04%	146	149	(3)	-2.01%
	NOVEMBER ENPLANEMENT DATA				NOVEMBER DEPLANEMENT DATA			
	2009	2008	Difference	% Change	2009	2008	Difference	% Change
MONTHLY TOTALS	31,095	28,735	2,360	8.21%	31,250	29,149	2,101	7.21%

TOTAL PASSENGERS FOR NOVEMBER 2009: 62,345
PERCENT CHANGE VERSUS NOVEMBER 2008: +7.71%

*Continental Shuttle Bus passengers are not included in any airline passenger enplanement or deplanement statistics.