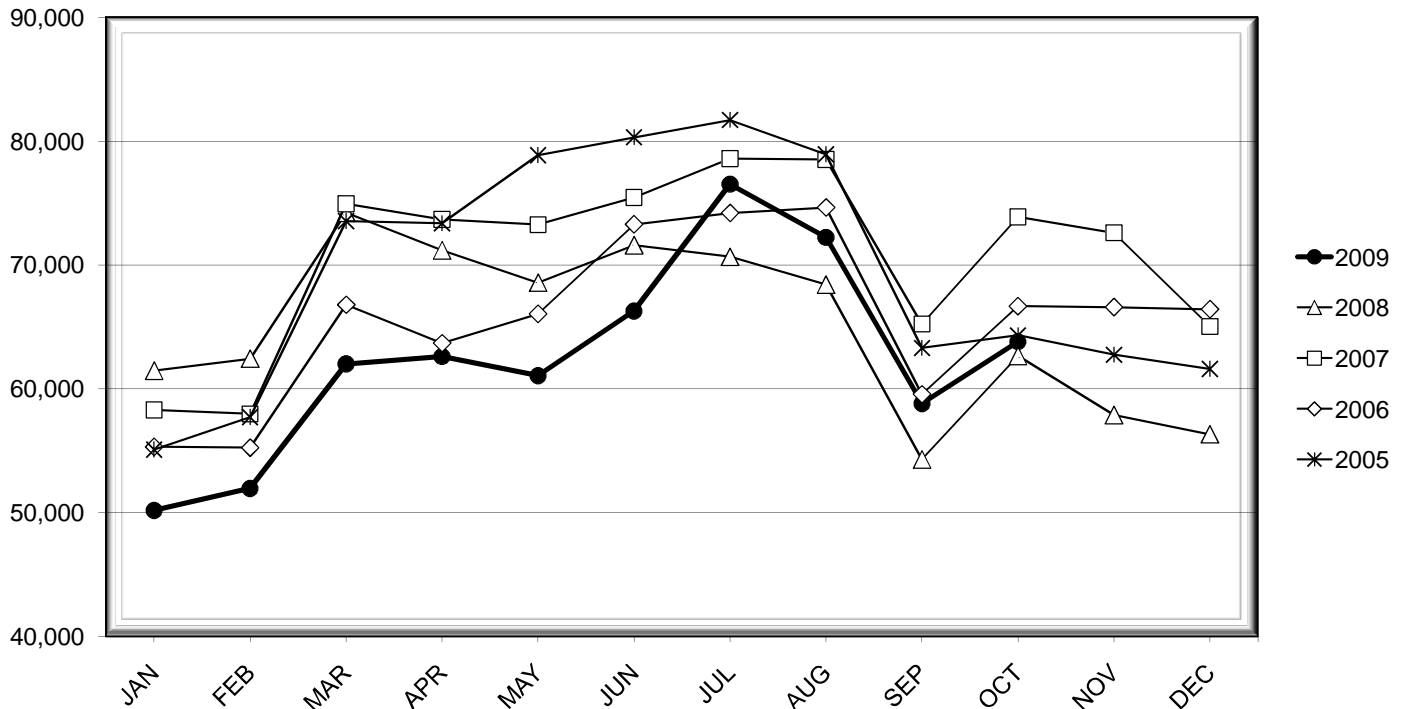


# LEHIGH VALLEY INTERNATIONAL AIRPORT MONTHLY TRAFFIC REPORT OCTOBER 2009

## TOTAL PASSENGER TRAFFIC COMPARISON

<i>Month</i>	<i>2009</i>	<i>Percent Difference</i>	<i>2008</i>	<i>2007</i>	<i>2006</i>	<i>2005</i>
January	<b>50,185</b>	-18.35%	61,467	58,300	55,315	55,088
February	<b>51,957</b>	-16.79%	62,440	57,976	55,252	57,726
March	<b>62,015</b>	-16.47%	74,242	74,945	66,789	73,543
April	<b>62,614</b>	-12.05%	71,192	73,686	63,689	73,368
May	<b>61,070</b>	-10.95%	68,579	73,261	66,055	78,874
June	<b>66,287</b>	-7.44%	71,612	75,457	73,290	80,321
July	<b>76,539</b>	8.31%	70,667	78,592	74,201	81,714
August	<b>72,230</b>	5.58%	68,415	78,530	74,645	78,941
September	<b>58,818</b>	8.34%	54,291	65,241	59,559	63,305
October	<b>63,807</b>	1.83%	62,660	73,890	66,681	64,328
November			57,884	72,603	66,601	62,755
December			56,327	65,045	66,434	61,609

## COMPARISON OF TOTAL PASSENGERS



**LEHIGH VALLEY INTERNATIONAL AIRPORT (ABE)  
MONTHLY TRAFFIC REPORT  
OCTOBER 2009**

		OCTOBER				YEAR-TO-DATE			
		2009	2008	Increase (Decrease)	Percent Difference	2009	2008	Increase (Decrease)	Percent Difference
<b>MAJOR AIRLINES:</b>									
Passengers									
Enplaned		6,086	3,149	2,937	93.27%	40,266	30,627	9,639	31.47%
Deplaned		5,681	2,794	2,887	103.33%	36,018	27,107	8,911	32.87%
Sub-total		11,767	5,943	5,824	98.00%	76,284	57,734	18,550	32.13%
<b>REGIONAL AIRLINES:</b>									
Passengers									
Enplaned		26,217	28,667	(2,450)	-8.55%	274,122	304,768	(30,646)	-10.06%
Deplaned		25,823	28,050	(2,227)	-7.94%	275,130	303,255	(28,125)	-9.27%
Sub-total		52,040	56,717	(4,677)	-8.25%	549,252	608,023	(58,771)	-9.67%
<b>TOTAL PASSENGERS</b>		<b>63,807</b>	<b>62,660</b>	<b>1,147</b>	<b>1.83%</b>	<b>625,536</b>	<b>665,757</b>	<b>(40,221)</b>	<b>-6.04%</b>
<b>FREIGHT:</b>									
Enplaned		1,320,851	2,023,573	(702,722)	-34.73%	11,948,606	18,361,607	(6,413,001)	-34.93%
Deplaned		1,263,616	1,796,449	(532,833)	-29.66%	10,970,747	16,805,872	(5,835,125)	-34.72%
Sub-total		2,584,467	3,820,022	(1,235,555)	-32.34%	22,919,353	35,167,479	(12,248,126)	-34.83%
<b>MAIL:</b>									
Enplaned		0	0	0	N/A	0	12	(12)	-100.00%
Deplaned		0	0	0	N/A	0	399	(399)	-100.00%
Sub-total		0	0	0	N/A	0	411	(411)	-100.00%
<b>TOTAL CARGO</b>		<b>2,584,467</b>	<b>3,820,022</b>	<b>(1,235,555)</b>	<b>-32.34%</b>	<b>22,919,353</b>	<b>35,167,890</b>	<b>(12,248,537)</b>	<b>-34.83%</b>
<b>CUSTOMS:</b>									
Entries		261	389	(128)	-32.90%	2,932	3,304	(372)	-11.26%

## MONTHLY AIRCRAFT ACTIVITY

The FEDERAL AVIATION ADMINISTRATION  
AIR TRAFFIC CONTROL TOWER at LVIA recorded  
the following aircraft take-offs and landings for the month:

		OCTOBER				YEAR-TO-DATE			
		2009	2008	Increase (Decrease)	Percent Difference	2009	2008	Increase (Decrease)	Percent Difference
Major Airlines		377	478	(101)	-21.13%	3,692	10,782	(7,090)	-65.76%
Regional Airlines		1,763	1,842	(79)	-4.29%	17,262	13,700	3,562	26.00%
General Aviation		2,903	3,475	(572)	-16.46%	28,399	39,279	(10,880)	-27.70%
Military		42	105	(63)	-60.00%	625	777	(152)	-19.56%
Total Itinerant		5,085	5,900	(815)	-13.81%	49,978	64,538	(14,560)	-22.56%
Total Local		3,733	4,368	(635)	-14.54%	42,086	43,738	(1,652)	-3.78%
<b>TOTAL OPERATIONS</b>		<b>8,818</b>	<b>10,268</b>	<b>(1,450)</b>	<b>-14.12%</b>	<b>92,064</b>	<b>108,276</b>	<b>(16,212)</b>	<b>-14.97%</b>

**LEHIGH VALLEY INTERNATIONAL AIRPORT (ABE)  
MONTHLY TRAFFIC REPORT  
AIRLINE PASSENGER STATISTICS**

AIRLINE / OPERATOR	OCTOBER ENPLANEMENT DATA				OCTOBER DEPLANEMENT DATA			
	2009	2008	Difference	% Change	2009	2008	Difference	% Change
Air Georgian	256	485	(229)	-47.22%	262	493	(231)	-46.86%
AirTran	3,051	-	3,051	N/A	2,872	-	2,872	N/A
Allegiant Air	4,863	3,069	1,794	58.46%	4,825	2,987	1,838	61.53%
* Continental Shuttle Bus	1,257	954	303	31.76%	852	813	39	4.80%
CommutAir	1,189	-	1,189	N/A	609	-	609	N/A
Express Jet	1,580	2,561	(981)	-38.31%	2,043	2,666	(623)	-23.37%
<b>*Continental Express Total</b>	<b>2,769</b>	<b>2,561</b>	<b>208</b>	<b>8.12%</b>	<b>2,652</b>	<b>2,666</b>	<b>(14)</b>	<b>-0.53%</b>
Atlantic Southeast	2,975	3,780	(805)	-21.30%	3,218	3,735	(517)	-13.84%
<b>Delta Connection Total</b>	<b>2,975</b>	<b>3,780</b>	<b>(805)</b>	<b>-21.30%</b>	<b>3,218</b>	<b>3,735</b>	<b>(517)</b>	<b>-13.84%</b>
Pinnacle	3,656	3,307	349	10.55%	3,054	3,389	(335)	-9.88%
<b>Northwest Airlink Total</b>	<b>3,656</b>	<b>3,307</b>	<b>349</b>	<b>10.55%</b>	<b>3,054</b>	<b>3,389</b>	<b>(335)</b>	<b>-9.88%</b>
Colgan Air	2,434	2,417	17	0.70%	2,592	2,319	273	11.77%
Mesa	2,282	3,453	(1,171)	-33.91%	2,454	2,598	(144)	-5.54%
Skywest	1,173	2,180	(1,007)	-46.19%	886	2,418	(1,532)	-63.36%
<b>United Express Total</b>	<b>5,889</b>	<b>8,050</b>	<b>(2,161)</b>	<b>-26.84%</b>	<b>5,932</b>	<b>7,335</b>	<b>(1,403)</b>	<b>-19.13%</b>
Air Wisconsin	1,340	-	1,340	N/A	1,694	-	1,694	N/A
Mesa	-	1,673	(1,673)	-100.00%	-	1,623	(1,623)	-100.00%
PSA Airlines	2,045	1,456	589	40.45%	2,083	1,566	517	33.01%
Piedmont Airlines	2,424	4,116	(1,692)	-41.11%	2,103	3,936	(1,833)	-46.57%
US Airways Express Subtotal	5,809	7,245	(1,436)	-19.82%	5,880	7,125	(1,245)	-17.47%
US Airways Mainline	3,035	3,149	(114)	-3.62%	2,809	2,794	15	0.54%
<b>US Airways Total</b>	<b>8,844</b>	<b>10,394</b>	<b>(1,550)</b>	<b>-14.91%</b>	<b>8,689</b>	<b>9,919</b>	<b>(1,230)</b>	<b>-12.40%</b>
Charters	-	170	(170)	-100.00%	-	320	(320)	-100.00%

MONTHLY TOTALS	OCTOBER ENPLANEMENT DATA				OCTOBER DEPLANEMENT DATA			
	2009	2008	Difference	% Change	2009	2008	Difference	% Change
	<b>32,303</b>	<b>31,816</b>	<b>487</b>	<b>1.53%</b>	<b>31,504</b>	<b>30,844</b>	<b>660</b>	<b>2.14%</b>

**TOTAL PASSENGERS FOR OCTOBER 2009: 63,807**  
**PERCENT CHANGE VERSUS OCTOBER 2008: +1.83%**

\*Continental Shuttle Bus passengers are not included in any airline passenger enplanement or deplanement statistics.