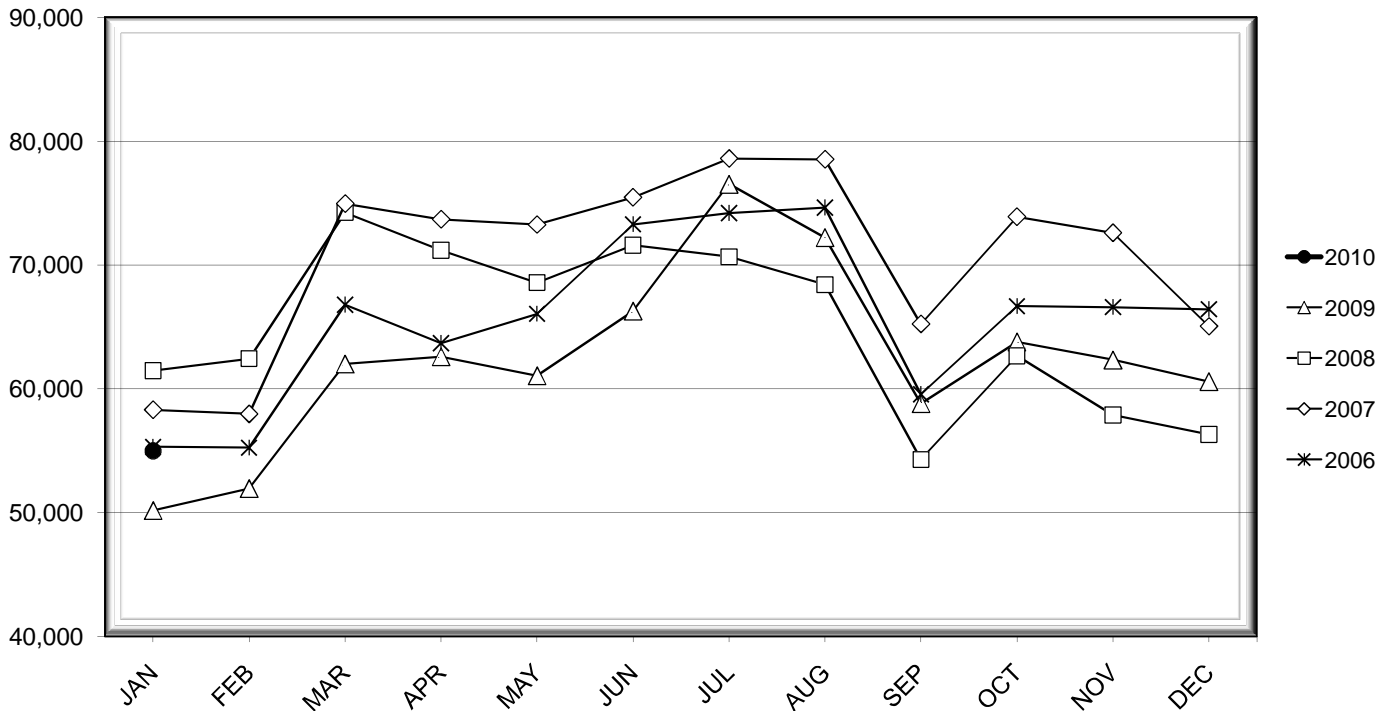


# LEHIGH VALLEY INTERNATIONAL AIRPORT MONTHLY TRAFFIC REPORT JANUARY 2010

## TOTAL PASSENGER TRAFFIC COMPARISON

<i>Month</i>	<i>2010</i>	<i>Percent Difference</i>	<i>2009</i>	<i>2008</i>	<i>2007</i>	<i>2006</i>
January	<b>54,984</b>	9.56%	<b>50,185</b>	61,467	58,300	55,315
February			<b>51,957</b>	62,440	57,976	55,252
March			<b>62,015</b>	74,242	74,945	66,789
April			<b>62,614</b>	71,192	73,686	63,689
May			<b>61,070</b>	68,579	73,261	66,055
June			<b>66,287</b>	71,612	75,457	73,290
July			<b>76,539</b>	70,667	78,592	74,201
August			<b>72,230</b>	68,415	78,530	74,645
September			<b>58,818</b>	54,291	65,241	59,559
October			<b>63,807</b>	62,660	73,890	66,681
November			<b>62,345</b>	57,884	72,603	66,601
December			<b>60,601</b>	56,327	65,045	66,434

## COMPARISON OF TOTAL PASSENGERS



**LEHIGH VALLEY INTERNATIONAL AIRPORT (ABE)  
MONTHLY TRAFFIC REPORT  
JANUARY 2010**

		<b>JANUARY</b>				<b>YEAR-TO-DATE</b>			
		<b>2010</b>	<b>2009</b>	<b>Increase (Decrease)</b>	<b>Percent Difference</b>	<b>2010</b>	<b>2009</b>	<b>Increase (Decrease)</b>	<b>Percent Difference</b>
<b>MAJOR AIRLINES:</b>									
Passengers									
Enplaned		5,947	2,772	3,175	114.54%	5,947	2,772	3,175	114.54%
Deplaned		5,523	1,922	3,601	187.36%	5,523	1,922	3,601	187.36%
Sub-total		11,470	4,694	6,776	144.35%	11,470	4,694	6,776	144.35%
<b>REGIONAL AIRLINES:</b>									
Passengers									
Enplaned		22,105	23,003	(898)	-3.90%	22,105	23,003	(898)	-3.90%
Deplaned		21,409	22,488	(1,079)	-4.80%	21,409	22,488	(1,079)	-4.80%
Sub-total		43,514	45,491	(1,977)	-4.35%	43,514	45,491	(1,977)	-4.35%
<b>TOTAL PASSENGERS</b>		<b>54,984</b>	<b>50,185</b>	<b>4,799</b>	<b>9.56%</b>	<b>54,984</b>	<b>50,185</b>	<b>4,799</b>	<b>9.56%</b>
<b>CARGO:</b>									
Enplaned		1,171,475	1,069,201	102,274	9.57%	1,171,475	1,069,201	102,274	9.57%
Deplaned		1,205,808	1,019,159	186,649	18.31%	1,205,808	1,019,159	186,649	18.31%
<b>TOTAL CARGO</b>		<b>2,377,283</b>	<b>2,088,360</b>	<b>288,923</b>	<b>13.83%</b>	<b>2,377,283</b>	<b>2,088,360</b>	<b>288,923</b>	<b>13.83%</b>
<b>CUSTOMS:</b>									
Entries		205	320	(115)	-35.94%	205	320	(115)	-35.94%

**MONTHLY AIRCRAFT ACTIVITY**

The FEDERAL AVIATION ADMINISTRATION  
AIR TRAFFIC CONTROL TOWER at LVIA recorded  
the following aircraft take-offs and landings for the month:

		<b>JANUARY</b>				<b>YEAR-TO-DATE</b>			
		<b>2010</b>	<b>2009</b>	<b>Increase (Decrease)</b>	<b>Percent Difference</b>	<b>2010</b>	<b>2009</b>	<b>Increase (Decrease)</b>	<b>Percent Difference</b>
Major Airlines		421	343	78	22.74%	421	343	78	22.74%
Regional Airlines		1,281	1,681	(400)	-23.80%	1,281	1,681	(400)	-23.80%
General Aviation		2,517	2,351	166	7.06%	2,517	2,351	166	7.06%
Military		29	40	(11)	-27.50%	29	40	(11)	-27.50%
Total Itinerant		4,248	4,415	(167)	-3.78%	4,248	4,415	(167)	-3.78%
Total Local		4,026	3,328	698	20.97%	4,026	3,328	698	20.97%
<b>TOTAL OPERATIONS</b>		<b>8,274</b>	<b>7,743</b>	<b>531</b>	<b>6.86%</b>	<b>8,274</b>	<b>7,743</b>	<b>531</b>	<b>6.86%</b>

**LEHIGH VALLEY INTERNATIONAL AIRPORT (ABE)  
MONTHLY TRAFFIC REPORT  
AIRLINE PASSENGER STATISTICS**

AIRLINE / OPERATOR	JANUARY ENPLANEMENT DATA				JANUARY DEPLANEMENT DATA			
	2010	2009	Difference	% Change	2010	2009	Difference	% Change
Air Georgian	155	251	(96)	-38.25%	140	247	(107)	-43.32%
AirTran	3,810	-	3,810	N/A	3,632	-	3,632	N/A
Allegiant Air	4,116	4,417	(301)	-6.81%	4,009	4,327	(318)	-7.35%
* Continental Shuttle Bus	1,116	807	309	38.29%	723	523	200	38.24%
CommutAir	390	-	390	N/A	234	-	234	N/A
Express Jet	620	1,458	(838)	-57.48%	852	1,386	(534)	-38.53%
<b>*Continental Express Total</b>	<b>1,010</b>	<b>1,458</b>	<b>(448)</b>	<b>-30.73%</b>	<b>1,086</b>	<b>1,386</b>	<b>(300)</b>	<b>-21.65%</b>
Atlantic Southeast	2,720	2,479	241	9.72%	2,912	2,540	372	14.65%
Pinnacle	2,437	2,604	(167)	-6.41%	2,397	2,415	(18)	-0.75%
<b>Delta Air Lines Total</b>	<b>5,157</b>	<b>5,083</b>	<b>74</b>	<b>1.46%</b>	<b>5,309</b>	<b>4,955</b>	<b>354</b>	<b>7.14%</b>
Direct Air	702	834	(132)	-15.83%	640	830	(190)	-22.89%
Colgan Air	2,144	1,978	166	8.39%	1,947	1,912	35	1.83%
Express Jet	1,861	-	1,861	N/A	1,752	-	1,752	N/A
Mesa	941	1,241	(300)	-24.17%	987	1,072	(85)	-7.93%
Skywest	145	1,953	(1,808)	-92.58%	85	1,728	(1,643)	-95.08%
<b>United Express Total</b>	<b>5,091</b>	<b>5,172</b>	<b>(81)</b>	<b>-1.57%</b>	<b>4,771</b>	<b>4,712</b>	<b>59</b>	<b>1.25%</b>
Air Wisconsin	1,726	-	1,726	N/A	1,893	-	1,893	N/A
Mesa	291	1,187	(896)	-75.48%	260	1,044	(784)	-75.10%
PSA Airlines	1,151	1,445	(294)	-20.35%	1,212	1,751	(539)	-30.78%
Piedmont Airlines	2,587	3,047	(460)	-15.10%	1,970	3,127	(1,157)	-37.00%
US Airways Express Subtotal	5,755	5,679	76	1.34%	5,335	5,922	(587)	-9.91%
US Airways Mainline	2,137	2,772	(635)	-22.91%	1,891	1,922	(31)	-1.61%
<b>US Airways Total</b>	<b>7,892</b>	<b>8,451</b>	<b>(559)</b>	<b>-6.61%</b>	<b>7,226</b>	<b>7,844</b>	<b>(618)</b>	<b>-7.88%</b>
Charters	119	109	10	9.17%	119	109	10	9.17%

MONTHLY TOTALS	JANUARY ENPLANEMENT DATA				JANUARY DEPLANEMENT DATA			
	2010	2009	Difference	% Change	2010	2009	Difference	% Change
	<b>28,052</b>	<b>25,775</b>	<b>2,277</b>	<b>8.83%</b>	<b>26,932</b>	<b>24,410</b>	<b>2,522</b>	<b>10.33%</b>

**TOTAL PASSENGERS FOR JANUARY 2010: 54,984**  
**PERCENT CHANGE VERSUS JANUARY 2009: +9.56%**

\*Continental Shuttle Bus passengers are not included in any airline passenger enplanement or deplanement statistics.