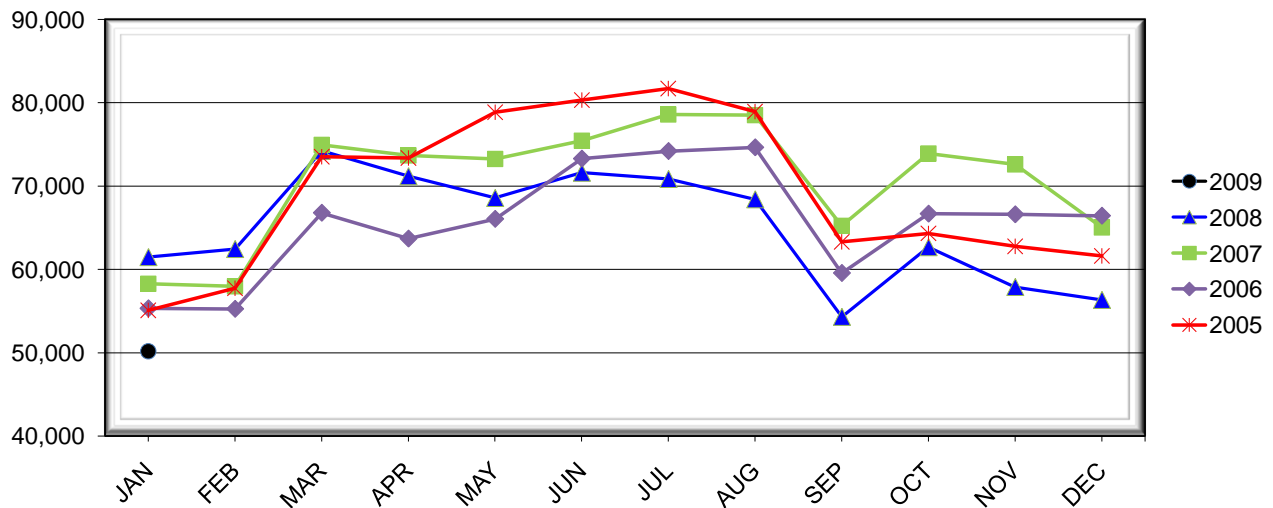


LEHIGH VALLEY INTERNATIONAL AIRPORT MONTHLY TRAFFIC REPORT JANUARY 2009

TOTAL PASSENGER TRAFFIC COMPARISON

<i>Month</i>	<i>2009</i>	<i>Percent Difference</i>	<i>2008</i>	<i>2007</i>	<i>2006</i>	<i>2005</i>
January	50,185	-18.35%	61,467	58,300	55,315	55,088
February			62,440	57,976	55,252	57,726
March			74,242	74,945	66,789	73,543
April			71,192	73,686	63,689	73,368
May			68,579	73,261	66,055	78,874
June			71,612	75,457	73,290	80,321
July			70,859	78,592	74,201	81,714
August			68,415	78,530	74,645	78,941
September			54,291	65,241	59,559	63,305
October			62,660	73,890	66,681	64,328
November			57,884	72,603	66,601	62,755
December			56,327	65,045	66,434	61,609

COMPARISON OF TOTAL PASSENGERS CURRENT YEAR VS. PRIOR YEARS



**LEHIGH VALLEY INTERNATIONAL AIRPORT (ABE)
MONTHLY TRAFFIC REPORT
JANUARY 2009**

		JANUARY				YEAR-TO-DATE			
		2009	2008	Increase (Decrease)	Percent Difference	2009	2008	Increase (Decrease)	Percent Difference
MAJOR AIRLINES:									
Passengers									
Enplaned		2,772	2,982	(210)	-7.04%	2,772	2,982	(210)	-7.04%
Deplaned		1,922	2,430	(508)	-20.91%	1,922	2,430	(508)	-20.91%
Sub-total		4,694	5,412	(718)	-13.27%	4,694	5,412	(718)	-13.27%
REGIONAL AIRLINES:									
Passengers									
Enplaned		23,003	28,855	(5,852)	-20.28%	23,003	28,855	(5,852)	-20.28%
Deplaned		22,488	27,200	(4,712)	-17.32%	22,488	27,200	(4,712)	-17.32%
Sub-total		45,491	56,055	(10,564)	-18.85%	45,491	56,055	(10,564)	-18.85%
TOTAL PASSENGERS		50,185	61,467	(11,282)	-18.35%	50,185	61,467	(11,282)	-18.35%
FREIGHT:									
Enplaned		1,069,201	2,023,186	(953,985)	-47.15%	1,069,201	2,023,186	(953,985)	-47.15%
Deplaned		1,019,159	1,709,920	(690,761)	-40.40%	1,019,159	1,709,920	(690,761)	-40.40%
Sub-total		2,088,360	3,733,106	(1,644,746)	-44.06%	2,088,360	3,733,106	(1,644,746)	-44.06%
MAIL:									
Enplaned		0	0	0	N/A	0	0	0	N/A
Deplaned		0	102	(102)	-100.00%	0	102	(102)	-100.00%
Sub-total		0	102	(102)	-100.00%	0	102	(102)	-100.00%
TOTAL CARGO		2,088,360	3,733,208	(1,644,848)	-44.06%	2,088,360	3,733,208	(1,644,848)	-44.06%

MONTHLY AIRCRAFT ACTIVITY

The FEDERAL AVIATION ADMINISTRATION
AIR TRAFFIC CONTROL TOWER at LVIA recorded
the following aircraft take-offs and landings for the month:

		JANUARY				YEAR-TO-DATE			
		2009	2008	Increase (Decrease)	Percent Difference	2009	2008	Increase (Decrease)	Percent Difference
Major Airlines		343	1,285	(942)	-73.31%	343	1,285	(942)	-73.31%
Regional Airlines		1,681	928	753	81.14%	1,681	928	753	81.14%
General Aviation		2,351	3,444	(1,093)	-31.74%	2,351	3,444	(1,093)	-31.74%
Military		40	84	(44)	-52.38%	40	84	(44)	-52.38%
Total Itinerant		4,415	5,741	(1,326)	-23.10%	4,415	5,741	(1,326)	-23.10%
Total Local		3,328	3,934	(606)	-15.40%	3,328	3,934	(606)	-15.40%
TOTAL OPERATIONS		7,743	9,675	(1,932)	-19.97%	7,743	9,675	(1,932)	-19.97%

